

ECM MOTOR FLA

| SIZE | MOTOR H.P. | 115V | 208V | 240V | 277V |
|------|------------|-------|-------|-------|------|
| 20 | 1/3 | 3.25 | 2.25 | 1.90 | 1.29 |
| 30 | 1/2 | 4.86 | 3.13 | 2.54 | 2.06 |
| 40 | 1/2 | 5.12 | 3.21 | 2.54 | 2.26 |
| 50 | 1/2 X 2 | 8.72 | 5.29 | 4.11 | 3.47 |
| 60 | 1/2 X 2 | 9.60 | 5.91 | 4.64 | 4.60 |
| 70 | 3/4 X 2 | 19.04 | 13.33 | 11.37 | 7.40 |

PSC MOTOR FLA

| SIZE | MOTOR H.P. | 115V | 208V | 240V | 277V |
|------|------------|-------|------|------|------|
| 20 | 1/8 | 1.73 | 0.81 | 0.81 | 0.64 |
| 30 | 1/4 | 3.22 | 1.29 | 1.25 | 1.37 |
| 40 | 1/2 | 5.14 | 2.37 | 2.27 | 2.35 |
| 50 | 1/4 X 2 | 5.93 | 2.58 | 2.47 | 2.63 |
| 60 | 1/2 X 2 | 10.00 | 4.42 | 4.30 | 4.32 |
| 70 | 1/2 X 2 | 13.96 | 5.80 | 6.10 | 5.94 |



IMPERIAL UNITS (inches)

| UNIT SIZE | # OF BLOWERS | MAX FAN FLOW, CFM | OUTLET DUCT SIZE | | W | H |
|-----------|--------------|-------------------|------------------|--------|----|--------|
| | | | D | E | | |
| 20 | 1 | 500 | 21 | 9 | 21 | 10 1/2 |
| 30 | 1 | 800 | 21 | 9 | 21 | 10 1/2 |
| 40 | 1 | 950 | 26 | 11 1/2 | 26 | 12 1/2 |
| 50 | 2 | 1550 | 42 | 9 | 42 | 10 1/2 |
| 60 | 2 | 2050 | 48 | 11 1/2 | 48 | 12 1/2 |
| 70 | 2 | 2800 | 60 | 11 1/2 | 60 | 12 1/2 |

SI UNITS (mm)

| MAX FAN FLOW, L/S | OUTLET DUCT SIZE | | W | H |
|-------------------|------------------|-----|------|-----|
| | D | E | | |
| 236 | 533 | 229 | 533 | 267 |
| 377 | 533 | 229 | 533 | 267 |
| 448 | 660 | 292 | 660 | 318 |
| 731 | 1067 | 229 | 1067 | 267 |
| 968 | 1219 | 292 | 1219 | 318 |
| 1321 | 1524 | 292 | 1524 | 318 |

IMPERIAL UNITS (inches)

| CONNECTION SIZES | NUMBER OF ROWS | | |
|------------------|----------------|-------|-------|
| | 1 & 2 | 3 & 4 | 6 |
| 20-60 | 7/8 | 7/8 | 1 1/8 |
| 70 | 7/8 | 1 1/8 | 1 1/8 |

SI UNITS (mm)

| CONNECTION SIZES | NUMBER OF ROWS | | |
|------------------|----------------|-------|----|
| | 1 & 2 | 3 & 4 | 6 |
| 20-60 | 22 | 22 | 29 |
| 70 | 22 | 29 | 29 |

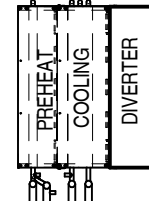
COIL CONFIGURATIONS (RH CONNECTIONS SHOWN)



- COOLING ONLY**
- 1
 - 2
 - 3
 - 4
 - 6



- HEATING ONLY**
- 1
 - 2
 - 3
 - 4
 - 6



- PREHEAT**
- 1-3
 - 2-3
 - 1-4
 - 2-4
 - 1-6
 - 2-6



- REHEAT**
- 3-1
 - 3-2
 - 4-1
 - 4-2
 - 6-1
 - 6-2

2 PIPE COOLING

2 PIPE HEATING

4 PIPE PREHEAT

4 PIPE REHEAT

| IMPERIAL UNITS (inches) | NUMBER OF ROWS | COOLING | | | HEATING | | | PREHEAT | | REHEAT | |
|-------------------------|----------------|---------|--------|--------|--------------------|--------|--------|-----------------|---------|-----------------|---------|
| | | 1 & 2 | 3 & 4 | 6 | 1 & 2 | 3 & 4 | 6 | 1-3;2-3;1-4;2-4 | 1-6;2-6 | 3-1;3-2;4-1;4-2 | 6-1;6-2 |
| L | 20-40 | 35 5/8 | 37 3/8 | 39 3/8 | 35 5/8 | 37 3/8 | 39 3/8 | 42 3/8 | 44 3/8 | 42 3/8 | 44 3/8 |
| | 50-60 | 38 1/8 | 39 7/8 | 41 7/8 | 38 1/8 | 39 7/8 | 41 7/8 | 44 7/8 | 46 7/8 | 44 7/8 | 46 7/8 |
| | 70 | 41 1/8 | 42 7/8 | 44 7/8 | 41 1/8 | 42 7/8 | 44 7/8 | 47 7/8 | 49 7/8 | 47 7/8 | 49 7/8 |
| X | | 11 | | | N/A (NO DRAIN PAN) | | | 16 1/8 | | 16 1/8 | |

| SI UNITS (mm) | NUMBER OF ROWS | COOLING | | | HEATING | | | PREHEAT | | REHEAT | |
|---------------|----------------|---------|-------|------|--------------------|-------|------|-----------------|---------|-----------------|---------|
| | | 1 & 2 | 3 & 4 | 6 | 1 & 2 | 3 & 4 | 6 | 1-3;2-3;1-4;2-4 | 1-6;2-6 | 3-1;3-2;4-1;4-2 | 6-1;6-2 |
| L | 20-40 | 905 | 950 | 1000 | 905 | 950 | 1000 | 1077 | 1127 | 1077 | 1127 |
| | 50-60 | 969 | 1013 | 1064 | 969 | 1013 | 1064 | 1140 | 1191 | 1140 | 1191 |
| | 70 | 1045 | 1089 | 1140 | 1045 | 1089 | 1140 | 1216 | 1267 | 1216 | 1267 |
| X | | 279 | | | N/A (NO DRAIN PAN) | | | 410 | | 410 | |

ALL METRIC DIMENSIONS () ARE SOFT CONVERTED. IMPERIAL DIMENSIONS ARE CONVERTED TO METRIC AND ROUNDED TO THE NEAREST MILLIMETER.

| | |
|------------------------|--|
| PROJECT: | FCHG FAN COIL HORIZONTAL HIGH PERFORMANCE GENESIS |
| ENGINEER: | |
| CUSTOMER: | |
| SUBMITTAL DATE: | |
| SPEC. SYMBOL: | 252380 |
| | 2023/02/22 |

FAN COIL NOTES:

- INTERNAL INSULATION – FIBERGLASS ½" (13mm) THICK, MIN. 1.5# DENSITY WHICH MEETS THE REQUIREMENTS OF NFPA 90A AND UL181.
- 20 GAUGE ZINC COATED STEEL HOUSING.
- ELECTRIC MOTOR 1 PHASE, 60 CYCLE, ECM STYLE.
- ETL LISTED TO MEET UL1995 & CSA236.
- 1" MERV 3 THROWAWAY FILTER (SIDE ACCESS).
- BOTTOM BLOWER ACCESS PANEL.
- RIGHT HAND CONTROLS CONFIGURATION IS SHOWN, LEFT HAND IS ALSO AVAILABLE.
- DISCHARGE DESIGNED FOR SLIP & DRIVE CLEAT DUCT CONNECTIONS.

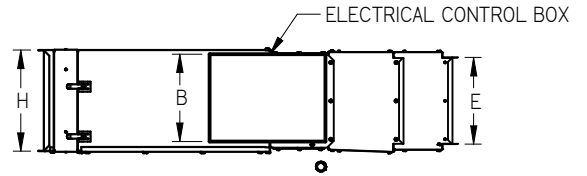
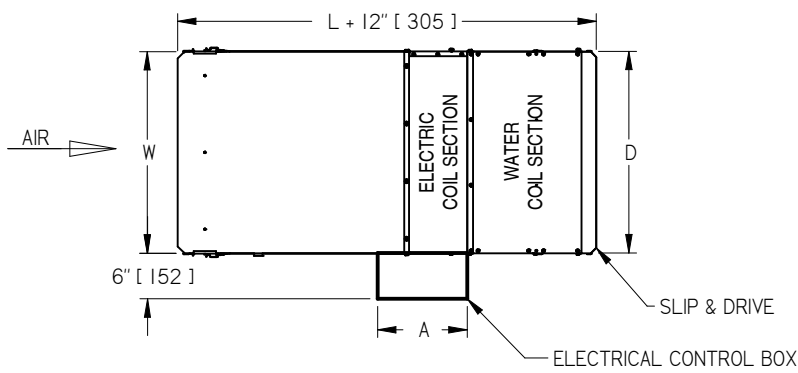
FILTER SIZES:

| SIZE | W | | H | | QTY / UNIT |
|---------|--------|-----|--------|-----|------------|
| | in | mm | in | mm | |
| 20 / 30 | 20 7/8 | 530 | 10 1/4 | 260 | 1 |
| 40 | 25 7/8 | 657 | 12 1/4 | 311 | 1 |
| 50 | 20 7/8 | 530 | 10 1/4 | 260 | 2 |
| 60 | 23 7/8 | 606 | 12 1/4 | 311 | 2 |
| 70 | 29 7/8 | 759 | 12 1/4 | 311 | 2 |

WATER COIL NOTES:

- FABRICATED FROM 22 GA. GALVANIZED STEEL. MECHANICALLY SEALED, LEAK RESISTANT CONSTRUCTION.
- ALUMINUM FINS AND COPPER TUBES WITH O.D. SWEAT CONNECTIONS.
- MANUAL AIRVENTS INCLUDED.
- HAND OF WATER COIL CONNECTIONS IS DETERMINED WHEN VIEWED FROM AIR INLET SIDE, RH SHOWN.
- COIL PERFORMANCE RATED AND CERTIFIED IN ACCORDANCE WITH THE CURRENT EDITION OF AHRI STANDARD 410.
- COOLING COIL INCLUDES SLOPED, GALVANIZED, STEEL PAN EXTERNALLY INSULATED WITH FOAM AND ¾" (19mm) MALE NPT CONNECTION.
- COOLING COIL BOTTOM PANEL IS SLOPED TO ENSURE CONDENSATE REMOVAL.
- SEE PERFORMANCE SCHEDULE FOR FLOW, HEATING / COOLING CAPACITY / WATER COIL CONFIGURATION.

ELECTRIC HEAT



IMPERIAL UNITS (inches)

| UNIT SIZE | CONTROL BOX SIZE | |
|-----------|------------------|----|
| | A | B |
| 20 | 22 | 10 |
| 30 | 22 | 10 |
| 40 | 18 | 12 |
| 50 | 22 | 10 |
| 60 | 18 | 12 |
| 70 | 18 | 12 |

ELECTRIC HEAT NOTES:

STANDARD COIL FEATURES:

- AUTOMATIC RESET THERMAL CUTOUT
- MANUAL RESET THERMAL CUTOUT
- LOW WATT DENSITY ELEMENTS, HIGH GRADE NICKEL-CHROME ALLOY
- HINGED ACCESS DOOR
- SINGLE POINT ELECTRICAL CONNECTION
- FAN INTERLOCKED WITH HEATING ELEMENTS
- REFER TO SUBMITTED CONTROL DIAGRAMS FOR STANDARD CONTROL COMPONENTS TO BE SUPPLIED

OPTIONAL COIL FEATURES:

- CONTROL CIRCUIT FUSES
- DOOR INTERLOCK DISCONNECT SWITCH
- ELECTRONIC MODULATING CONTROLS (EMC)
- MERCURY CONTACTORS
- MAIN SUPPLY FUSES
- DUAL POINT POWER CONNECTION
- SCR CONTROLS SCR-DAT CONTROLS

SUPPLY VOLTAGE:

- 115 / 1Ø
- 208 / 1Ø (3 WIRE)
- 240 / 1Ø
- 277 / 1Ø

NOTE: FOR SCR OPTION WITH PNEUMATIC

- CONTROL SIGNAL CONTACT PRICE
- 0 TO 10 Vdc CONTROL SIGNAL
 - 4 TO 20 mA CONTROL SIGNAL

NOTES

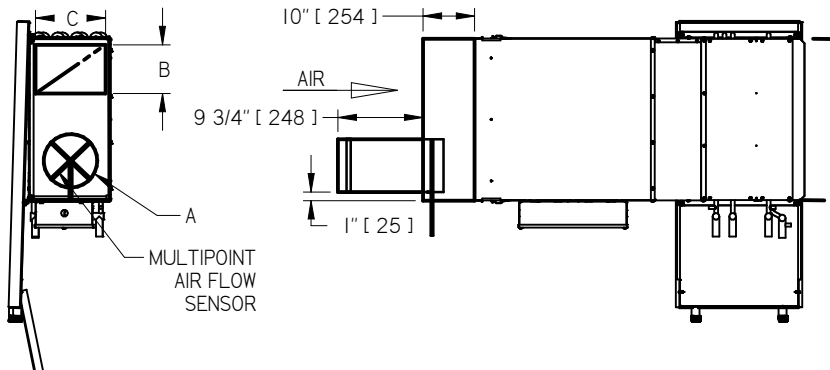
- 70 CFM PER KW MINIMUM AIR FLOW ACROSS HEATER COILS.
- MINIMUM 0.2" w.g.(50 Pa) EXTERNAL STATIC PRESSURE TO OPERATE.
- ASSEMBLY ETL CERTIFIED TO UL1995 & CSA236.

ALL METRIC DIMENSIONS () ARE SOFT CONVERTED. IMPERIAL DIMENSIONS ARE CONVERTED TO METRIC AND ROUNDED TO THE NEAREST MILLIMETER.

| | | | |
|------------------------|----------------------|---------------|--|
| PROJECT: | | PRICE | |
| ENGINEER: | | GH | FCHG FAN COIL HORIZONTAL HIGH PERFORMANCE GENESIS |
| CUSTOMER: | | 252380 | |
| SUBMITTAL DATE: | SPEC. SYMBOL: | 2023/02/22 | |

- OPTIONS:**
- DISCONNECT SWITCH (DSW)
 - HANGER BRACKETS (HB), SHIPPED LOOSE
 - SPRING HANGER BRACKETS (HBS), SHIPPED LOOSE
 - MOTOR FUSE
 - ECM DELUXE SPEED CONTROLLER
 - 2" MERV 8 FILTERS
 - 2" MERV 13 FILTERS
 - OVERFLOW SAFETY SWITCH (OFS)
 - AUXILIARY DRAIN PAN
 - STAINLESS STEEL COIL BOTTOM
 - STAINLESS STEEL DRAIN PAN
 - SECONDARY DRAIN CONNECTION
 - PSC MOTOR
 - COILS ACCESS DOORS (CAD) W/ SCREWS
- FAN COIL LINERS: FF50 SM50
 FB
- INLET SILENCER MEDIA TREATMENT:
 FC - FIBERGLASS CLOTH
 PL - POLYMER LINER

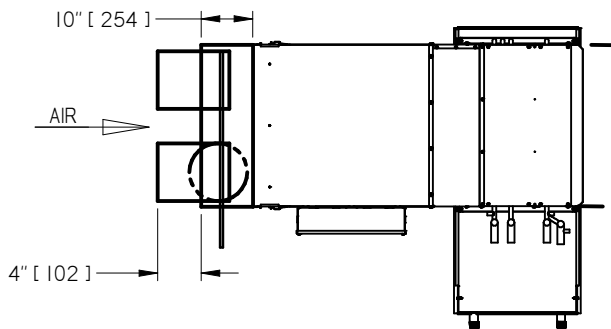
PRIMARY / FRESH AIR INLET (SHIPPED LOOSE)



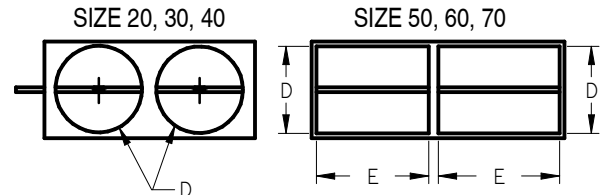
| PRIMARY / FRESH AIR INLET - A, in (mm) | | 6 (152) or 8 (203) | |
|--|------------------|--------------------|------------|
| UNIT SIZE | RETURN AIR INLET | | C, in (mm) |
| | B, in (mm) | C, in (mm) | |
| 20 / 30 | 10 1/2 (267) | 9 1/2 (241) | |
| 40 | 15 1/2 (394) | 11 1/2 (292) | |
| 50 | 31 1/2 (800) | 9 1/2 (241) | |
| 60 | 37 1/2 (953) | 11 1/2 (292) | |
| 70 | 49 1/2 (1257) | 11 1/2 (292) | |

| PRIMARY / FRESH AIR INLET - A, in (mm) | | 10 (254) | |
|--|------------------|--------------|------------|
| UNIT SIZE | RETURN AIR INLET | | C, in (mm) |
| | B, in (mm) | C, in (mm) | |
| 40 | 13 1/2 (343) | 11 1/2 (292) | |
| 60 | 35 1/2 (902) | 11 1/2 (292) | |
| 70 | 47 1/2 (1207) | 11 1/2 (292) | |

MIXING BOX (SHIPPED LOOSE)

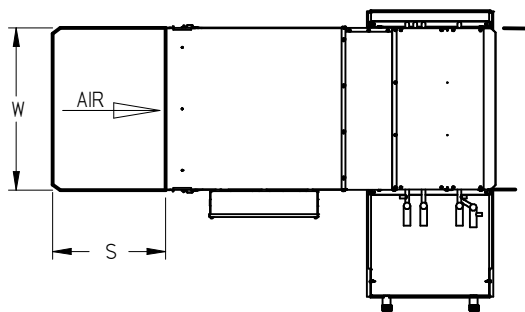


MIXING BOX CONFIGURATION



| SIZE | D, in | D, mm | E, in | E, mm |
|---------|-------|-------|-------|-------|
| 20 / 30 | 9 | 229 | - | - |
| 40 | 10 | 254 | - | - |
| 50 | 8 | 203 | 16 | 406 |
| 60 | 8 | 203 | 21 | 533 |
| 70 | 9 | 229 | 28 | 711 |

INLET SILENCER (SHIPPED LOOSE)

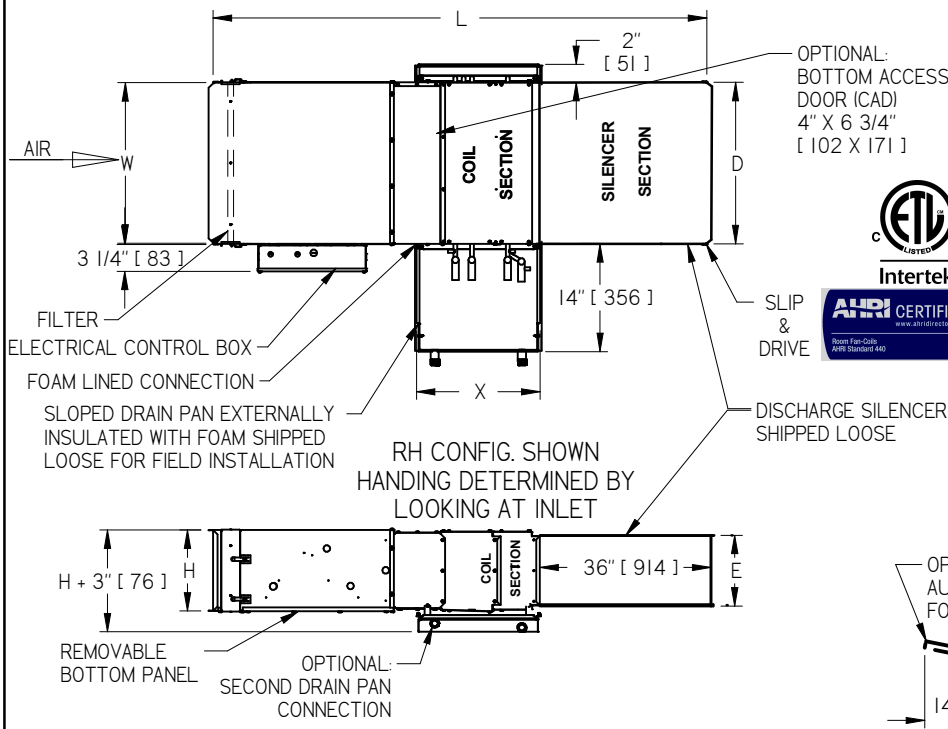


| SILENCER SIZE | S, in | S, mm |
|----------------|-------|-------|
| 20/30/40/50/60 | 18 | 457 |
| 70 | 36 | 914 |

RH CONFIGS. SHOWN
 HANDING DETERMINED BY
 LOOKING AT INLET

ALL METRIC DIMENSIONS () ARE SOFT CONVERTED. IMPERIAL DIMENSIONS ARE CONVERTED TO METRIC AND ROUNDED TO THE NEAREST MILLIMETER.

| | | | |
|------------------------|----------------------|--------------------------|--|
| PROJECT: | | PRICE[®] | |
| ENGINEER: | | GH | FCHG FAN COIL HORIZONTAL HIGH PERFORMANCE GENESIS |
| CUSTOMER: | | 252380 | |
| SUBMITTAL DATE: | SPEC. SYMBOL: | 2023/02/22 | |

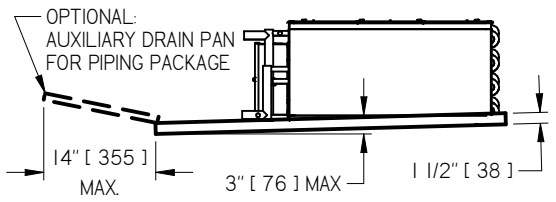


ECM MOTOR FLA

| SIZE | MOTOR H.P. | 115V | 208V | 240V | 277V |
|------|------------|-------|-------|-------|------|
| 20 | 1/3 | 3.25 | 2.25 | 1.90 | 1.29 |
| 30 | 1/2 | 4.86 | 3.13 | 2.54 | 2.06 |
| 40 | 1/2 | 5.12 | 3.21 | 2.54 | 2.26 |
| 50 | 1/2 X 2 | 8.72 | 5.29 | 4.11 | 3.47 |
| 60 | 1/2 X 2 | 9.60 | 5.91 | 4.64 | 4.60 |
| 70 | 3/4 X 2 | 19.04 | 13.33 | 11.37 | 7.40 |

PSC MOTOR FLA

| SIZE | MOTOR H.P. | 115V | 208V | 240V | 277V |
|------|------------|-------|------|------|------|
| 20 | 1/8 | 1.73 | 0.81 | 0.81 | 0.64 |
| 30 | 1/4 | 3.22 | 1.29 | 1.25 | 1.37 |
| 40 | 1/2 | 5.14 | 2.37 | 2.27 | 2.35 |
| 50 | 1/4 X 2 | 5.93 | 2.58 | 2.47 | 2.63 |
| 60 | 1/2 X 2 | 10.00 | 4.42 | 4.30 | 4.32 |
| 70 | 1/2 X 2 | 13.96 | 5.80 | 6.10 | 5.94 |



IMPERIAL UNITS (inches)

| UNIT SIZE | # OF BLOWERS | MAX FAN FLOW, CFM | OUTLET DUCT SIZE | | W | H |
|-----------|--------------|-------------------|------------------|--------|----|--------|
| | | | D | E | | |
| 20 | 1 | 495 | 21 | 9 | 21 | 10 1/2 |
| 30 | 1 | 760 | 21 | 9 | 21 | 10 1/2 |
| 40 | 1 | 1150 | 26 | 11 1/2 | 26 | 12 1/2 |
| 50 | 2 | 1475 | 42 | 9 | 42 | 10 1/2 |
| 60 | 2 | 2150 | 48 | 11 1/2 | 48 | 12 1/2 |
| 70 | 2 | 2700 | 60 | 11 1/2 | 60 | 12 1/2 |

SI UNITS (mm)

| MAX FAN FLOW, L/S | OUTLET DUCT SIZE | | W | H |
|-------------------|------------------|-----|------|-----|
| | D | E | | |
| 233 | 533 | 229 | 533 | 267 |
| 358 | 533 | 229 | 533 | 267 |
| 542 | 660 | 292 | 660 | 318 |
| 696 | 1067 | 229 | 1067 | 267 |
| 1014 | 1219 | 292 | 1219 | 318 |
| 1274 | 1524 | 292 | 1524 | 318 |

IMPERIAL UNITS (inches)

| CONNECTION SIZES | NUMBER OF ROWS | | |
|------------------|----------------|-------|-------|
| | 1 & 2 | 3 & 4 | 6 |
| 20-60 | 7/8 | 7/8 | 1 1/8 |
| 70 | 7/8 | 1 1/8 | 1 1/8 |

SI UNITS (mm)

| CONNECTION SIZES | NUMBER OF ROWS | | |
|------------------|----------------|-------|----|
| | 1 & 2 | 3 & 4 | 6 |
| 20-60 | 22 | 22 | 29 |
| 70 | 22 | 29 | 29 |

COIL CONFIGURATIONS (RH CONNECTIONS SHOWN)

| | | | |
|--|--|---|---|
| COOLING ONLY <input type="checkbox"/> 1 <input type="checkbox"/> 2 <input type="checkbox"/> 3 <input type="checkbox"/> 4 <input type="checkbox"/> 6 2 PIPE COOLING | HEATING ONLY <input type="checkbox"/> 1 <input type="checkbox"/> 2 <input type="checkbox"/> 3 <input type="checkbox"/> 4 <input type="checkbox"/> 6 2 PIPE HEATING | PREHEAT <input type="checkbox"/> 1-3 <input type="checkbox"/> 2-3 <input type="checkbox"/> 1-4 <input type="checkbox"/> 2-4 <input type="checkbox"/> 1-6 <input type="checkbox"/> 2-6 4 PIPE PREHEAT | REHEAT <input type="checkbox"/> 3-1 <input type="checkbox"/> 3-2 <input type="checkbox"/> 4-1 <input type="checkbox"/> 4-2 <input type="checkbox"/> 6-1 <input type="checkbox"/> 6-2 4 PIPE REHEAT |
|--|--|---|---|

| IMPERIAL UNITS (inches) | | NUMBER OF ROWS | | | | | | | | | | | | | | | | | |
|-------------------------|-------|----------------|--------|--------|--------------------|--------|--------|---------|--------|--------|--------|--------|--------|--------|--------|--------|--------|--------|--------|
| | | COOLING | | | HEATING | | | PREHEAT | | | REHEAT | | | | | | | | |
| L | 20-40 | 71 5/8 | 73 3/8 | 75 3/8 | 71 5/8 | 73 3/8 | 75 3/8 | 71 5/8 | 73 3/8 | 75 3/8 | 78 3/8 | 80 3/8 | 82 3/8 | 83 7/8 | 85 7/8 | 78 3/8 | 80 3/8 | 82 7/8 | 85 7/8 |
| | 50-60 | 74 1/8 | 75 7/8 | 77 7/8 | 74 1/8 | 75 7/8 | 77 7/8 | 74 1/8 | 75 7/8 | 77 7/8 | 80 7/8 | 82 7/8 | 85 7/8 | 83 7/8 | 85 7/8 | 80 7/8 | 82 7/8 | 85 7/8 | 87 7/8 |
| | 70 | 77 1/8 | 78 7/8 | 80 7/8 | 77 1/8 | 78 7/8 | 80 7/8 | 77 1/8 | 78 7/8 | 80 7/8 | 16 1/8 | 16 1/8 | 16 1/8 | 16 1/8 | 16 1/8 | 16 1/8 | 16 1/8 | 16 1/8 | 16 1/8 |
| X | | 11 | | | N/A (NO DRAIN PAN) | | | 16 1/8 | | | 16 1/8 | | | 16 1/8 | | | 16 1/8 | | |

| SI UNITS (mm) | | NUMBER OF ROWS | | | | | | | | | | | | | | | | | | |
|---------------|-------|----------------|------|------|--------------------|------|------|---------|------|------|--------|------|------|------|------|------|------|------|------|------|
| | | COOLING | | | HEATING | | | PREHEAT | | | REHEAT | | | | | | | | | |
| L | 20-40 | 1819 | 1864 | 1915 | 1819 | 1864 | 1915 | 1819 | 1864 | 1915 | 1991 | 2042 | 2054 | 2105 | 1991 | 2042 | 2054 | 2105 | 2130 | 2181 |
| | 50-60 | 1883 | 1927 | 1978 | 1883 | 1927 | 1978 | 1883 | 1927 | 1978 | 2054 | 2105 | 2130 | 2181 | 2054 | 2105 | 2130 | 2181 | 2130 | 2181 |
| | 70 | 1959 | 2003 | 2054 | 1959 | 2003 | 2054 | 1959 | 2003 | 2054 | 410 | 410 | 410 | 410 | 410 | 410 | 410 | 410 | 410 | 410 |
| X | | 279 | | | N/A (NO DRAIN PAN) | | | 410 | | | 410 | | | 410 | | | 410 | | | |

ALL METRIC DIMENSIONS () ARE SOFT CONVERTED. IMPERIAL DIMENSIONS ARE CONVERTED TO METRIC AND ROUNDED TO THE NEAREST MILLIMETER.

| | | |
|------------------------|----------------------|---|
| PROJECT: | PRICE | |
| ENGINEER: | G | FCHGQ |
| CUSTOMER: | 254507 | FAN COIL HORIZONTAL QUIET HIGH PERFORMANCE GENESIS |
| SUBMITTAL DATE: | SPEC. SYMBOL: | 2023/02/22 |

FAN COIL NOTES:

- INTERNAL INSULATION – FIBERGLASS 1/2" (13mm) THICK, MIN. 1.5# DENSITY WHICH MEETS THE REQUIREMENTS OF NFPA 90A AND UL181.
- 20 GAUGE ZINC COATED STEEL HOUSING.
- ELECTRIC MOTOR 1 PHASE, 60 CYCLE, ECM STYLE.
- ETL LISTED TO MEET UL1995 & CSA236.
- 1" MERV 3 THROWAWAY FILTER (SIDE ACCESS).
- BOTTOM BLOWER ACCESS PANEL.
- RIGHT HAND CONTROLS CONFIGURATION IS SHOWN, LEFT HAND IS ALSO AVAILABLE.
- DISCHARGE DESIGNED FOR SLIP & DRIVE CLEAT DUCT CONNECTIONS.

FILTER SIZES:

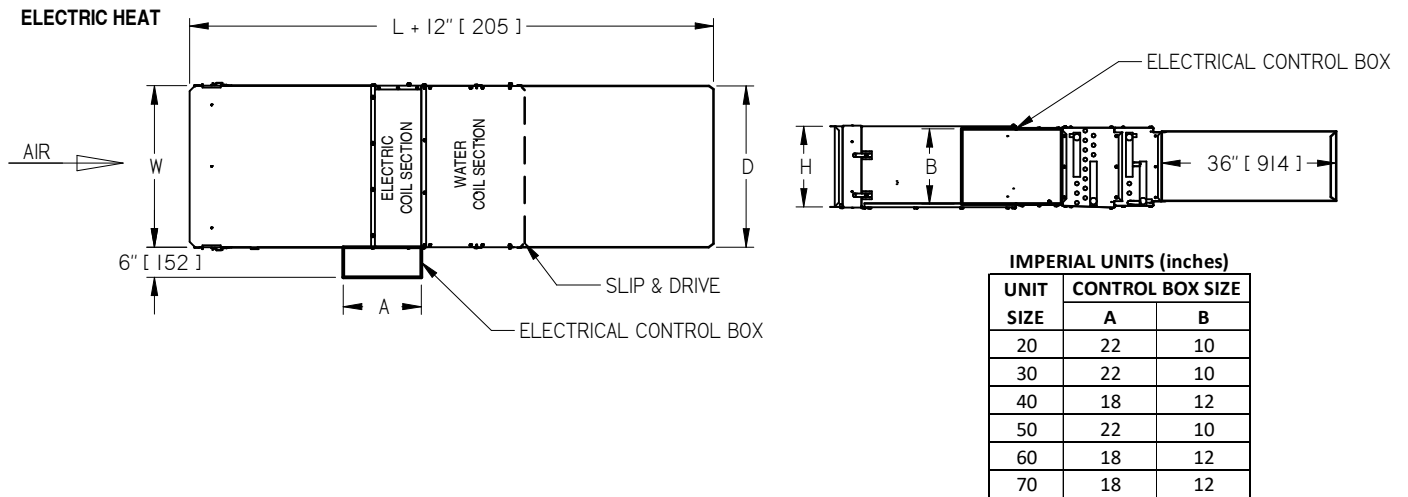
| SIZE | W | | H | | QTY / UNIT |
|---------|--------|-----|--------|-----|------------|
| | in | mm | in | mm | |
| 20 / 30 | 20 7/8 | 530 | 10 1/4 | 260 | 1 |
| 40 | 25 7/8 | 657 | 12 1/4 | 311 | 1 |
| 50 | 20 7/8 | 530 | 10 1/4 | 260 | 2 |
| 60 | 23 7/8 | 606 | 12 1/4 | 311 | 2 |
| 70 | 29 7/8 | 759 | 12 1/4 | 311 | 2 |

WATER COIL NOTES:

- FABRICATED FROM 22 GA. GALVANIZED STEEL. MECHANICALLY SEALED, LEAK RESISTANT CONSTRUCTION.
- ALUMINUM FINS AND COPPER TUBES WITH O.D. SWEAT CONNECTIONS.
- MANUAL AIRVENTS INCLUDED.
- HAND OF WATER COIL CONNECTIONS IS DETERMINED WHEN VIEWED FROM AIR INLET SIDE, RH SHOWN.
- COIL PERFORMANCE RATED AND CERTIFIED IN ACCORDANCE WITH THE CURRENT EDITION OF AHRI STANDARD 410.
- COOLING COIL INCLUDES SLOPED, GALVANIZED, STEEL PAN EXTERNALLY INSULATED WITH FOAM AND 3/4" (19mm) MALE NPT CONNECTION.
- COOLING COIL BOTTOM PANEL IS SLOPED TO ENSURE CONDENSATE REMOVAL.
- SEE PERFORMANCE SCHEDULE FOR FLOW, HEATING / COOLING CAPACITY / WATER COIL CONFIGURATION.

ABSORPTIVE DISCHARGE SILENCER NOTES:

- 22ga GALVANIZED CASING, MECHANICALLY FASTENED, WITH FIBERGLASS INSULATION.



ELECTRIC HEAT NOTES:

STANDARD COIL FEATURES:

- AUTOMATIC RESET THERMAL CUTOUT
- MANUAL RESET THERMAL CUTOUT
- LOW WATT DENSITY ELEMENTS, HIGH GRADE NICKEL-CHROME ALLOY
- HINGED ACCESS DOOR
- SINGLE POINT ELECTRICAL CONNECTION
- FAN INTERLOCKED WITH HEATING ELEMENTS
- REFER TO SUBMITTED CONTROL DIAGRAMS FOR STANDARD CONTROL COMPONENTS TO BE SUPPLIED

OPTIONAL COIL FEATURES:

- CONTROL CIRCUIT FUSES
 - DOOR INTERLOCK DISCONNECT SWITCH
 - ELECTRONIC MODULATING CONTROLS (EMC)
 - MERCURY CONTACTORS
 - MAIN SUPPLY FUSES
 - DUAL POINT POWER CONNECTION
 - SCR CONTROLS SCR-DAT CONTROLS
- NOTE: FOR SCR OPTION WITH PNEUMATIC CONTROL SIGNAL CONTACT PRICE
- 0 TO 10 Vdc CONTROL SIGNAL
 - 4 TO 20 mA CONTROL SIGNAL

SUPPLY VOLTAGE:

- 115 / 1Ø
- 208 / 1Ø (3 WIRE)
- 240 / 1Ø
- 277 / 1Ø

NOTES

- 70 CFM PER KW MINIMUM AIR FLOW ACROSS HEATER COILS.
- MINIMUM 0.2" w.g.(50 Pa) EXTERNAL STATIC PRESSURE TO OPERATE.
- ASSEMBLY ETL CERTIFIED TO UL1995 & CSA236.

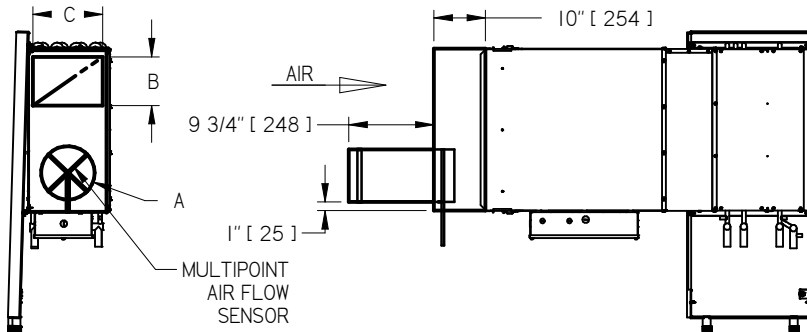
ALL METRIC DIMENSIONS () ARE SOFT CONVERTED. IMPERIAL DIMENSIONS ARE CONVERTED TO METRIC AND ROUNDED TO THE NEAREST MILLIMETER.

| | | | |
|------------------------|----------------------|---------------|---|
| PROJECT: | | PRICE® | |
| ENGINEER: | | GH | FCHGQ |
| CUSTOMER: | | 254507 | FAN COIL HORIZONTAL QUIET HIGH PERFORMANCE GENESIS |
| SUBMITTAL DATE: | SPEC. SYMBOL: | 2023/02/22 | |

- OPTIONS:**
- DISCONNECT SWITCH (DSW)
 - HANGER BRACKETS (HB), SHIPPED LOOSE
 - SPRING HANGER BRACKETS (HBS), SHIPPED LOOSE
 - MOTOR FUSE
 - ECM DELUXE SPEED CONTROLLER
 - 2" MERV 8 FILTERS
 - 2" MERV 13 FILTERS
 - OVERFLOW SAFETY FLOAT SWITCH (OFS)
 - AUXILIARY DRAIN PAN
 - STAINLESS STEEL COIL BOTTOM
 - STAINLESS STEEL DRAIN PAN
 - SECONDARY DRAIN CONNECTION
 - PSC MOTOR
 - COILS ACCESS DOORS (CAD) W/ SCREWS

- FAN COIL LINERS: FF50 SM50
 FB
 INLET SILENCER MEDIA TREATMENT:
 FC – FIBERGLASS CLOTH
 PL – POLYMER LINER

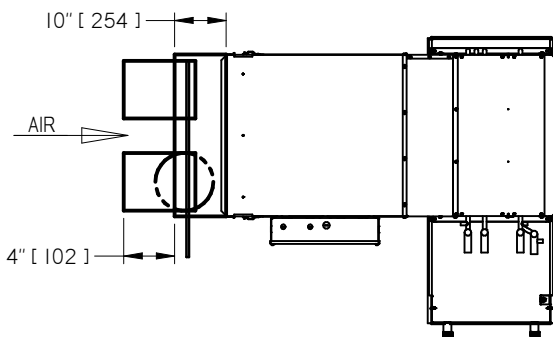
PRIMARY / FRESH AIR INLET (SHIPPED LOOSE)



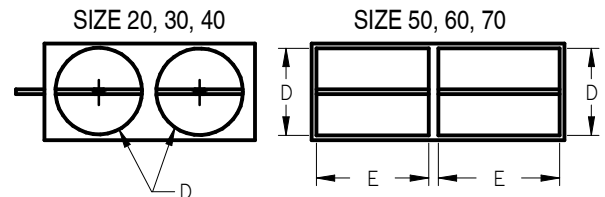
| PRIMARY / FRESH AIR INLET - A, in (mm) | | 6 (152) or 8 (203) | |
|--|------------------|--------------------|------------|
| UNIT SIZE | RETURN AIR INLET | | C, in (mm) |
| | B, in (mm) | C, in (mm) | |
| 20 / 30 | 10 1/2 (267) | 9 1/2 (241) | |
| 40 | 15 1/2 (394) | 11 1/2 (292) | |
| 50 | 31 1/2 (800) | 9 1/2 (241) | |
| 60 | 37 1/2 (953) | 11 1/2 (292) | |
| 70 | 49 1/2 (1257) | 11 1/2 (292) | |

| PRIMARY / FRESH AIR INLET - A, in (mm) | | 10 (254) | |
|--|------------------|--------------|------------|
| UNIT SIZE | RETURN AIR INLET | | C, in (mm) |
| | B, in (mm) | C, in (mm) | |
| 40 | 13 1/2 (343) | 11 1/2 (292) | |
| 60 | 35 1/2 (902) | 11 1/2 (292) | |
| 70 | 47 1/2 (1207) | 11 1/2 (292) | |

MIXING BOX (SHIPPED LOOSE)

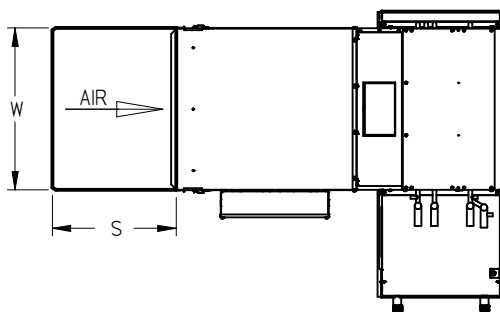


MIXING BOX CONFIGURATION



| SIZE | D, in | D, mm | E, in | E, mm |
|---------|-------|-------|-------|-------|
| 20 / 30 | 9 | 229 | - | - |
| 40 | 10 | 254 | - | - |
| 50 | 8 | 203 | 16 | 406 |
| 60 | 8 | 203 | 21 | 533 |
| 70 | 9 | 229 | 28 | 711 |

INLET SILENCER (SHIPPED LOOSE)



| SILENCER SIZE | S, in | S, mm |
|----------------|-------|-------|
| 20/30/40/50/60 | 18 | 457 |
| 70 | 36 | 914 |

RH CONFIGS. SHOWN
 HANDING DETERMINED BY
 LOOKING AT INLET

ALL METRIC DIMENSIONS () ARE SOFT CONVERTED. IMPERIAL DIMENSIONS ARE CONVERTED TO METRIC AND ROUNDED TO THE NEAREST MILLIMETER.

| | | | |
|------------------------|----------------------|---------------|---|
| PROJECT: | | PRICE | |
| ENGINEER: | | GH | FCHGQ |
| CUSTOMER: | | 254507 | FAN COIL HORIZONTAL QUIET HIGH PERFORMANCE GENESIS |
| SUBMITTAL DATE: | SPEC. SYMBOL: | 2023/02/22 | |